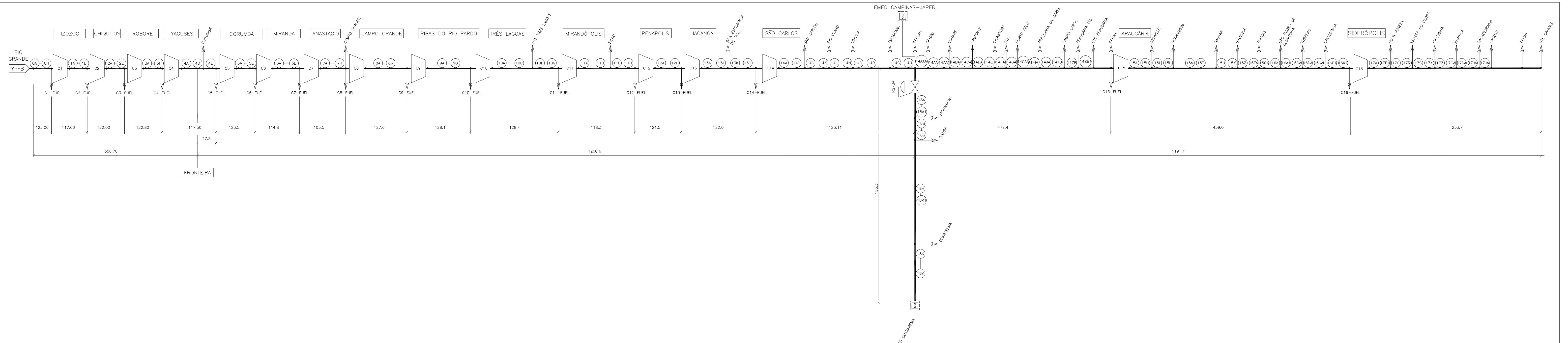
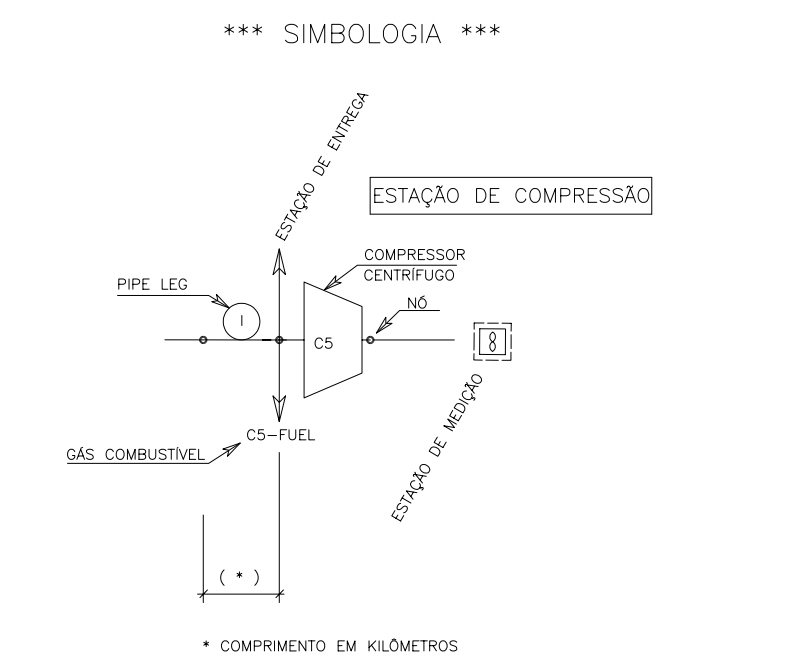


RL-5000-962-10C-003-C-ANEXO.DWG



PIPE LEGS		0A-0H	1A-1D	2A-2E	3A-3F	4A-4E	5A-5E	6A-6E	7A-7H	8A-8G	9A-9C	10A-10C	11A-11H	12A-12H	13A-13C	14A-14U	14AA-14ZB	15A-15GA	16A-16KA	17A-17JA	18A-18V
DIAM. NOMINAL	Pol.	32"														24"	20"	18"	16"	24"	
DIAM. INT. EQUIV.	Pol.	31.18	31.18	31.18	31.13	31.16	31.09	31.09	31.08	31.09	31.09	31.09	31.06	31.09	31.05	31.03	23.24	19.44	17.49	15.52	23.40
ESPESS. MÉDIA	Pol.	0.456	0.406	0.407	0.434	0.420	0.460	0.453	0.453	0.452	0.457	0.454	0.471	0.456	0.474	0.486	0.373	0.271	0.256	0.242	0.304
TEMP. AMB. VERÃO	°C	30						28						26							
U (SOLO)	Kcal/h.m ² .°C															1.9					
ROGOSIDADE	mm															0.009		0.018			
MAOP	Kgf/cm ² g															99.84		75.00			



- CORUMBÁ-CAMPINAS
- CAMPINAS-GUARAREMA
- CAMPINAS-CANOAS

ANEXO I